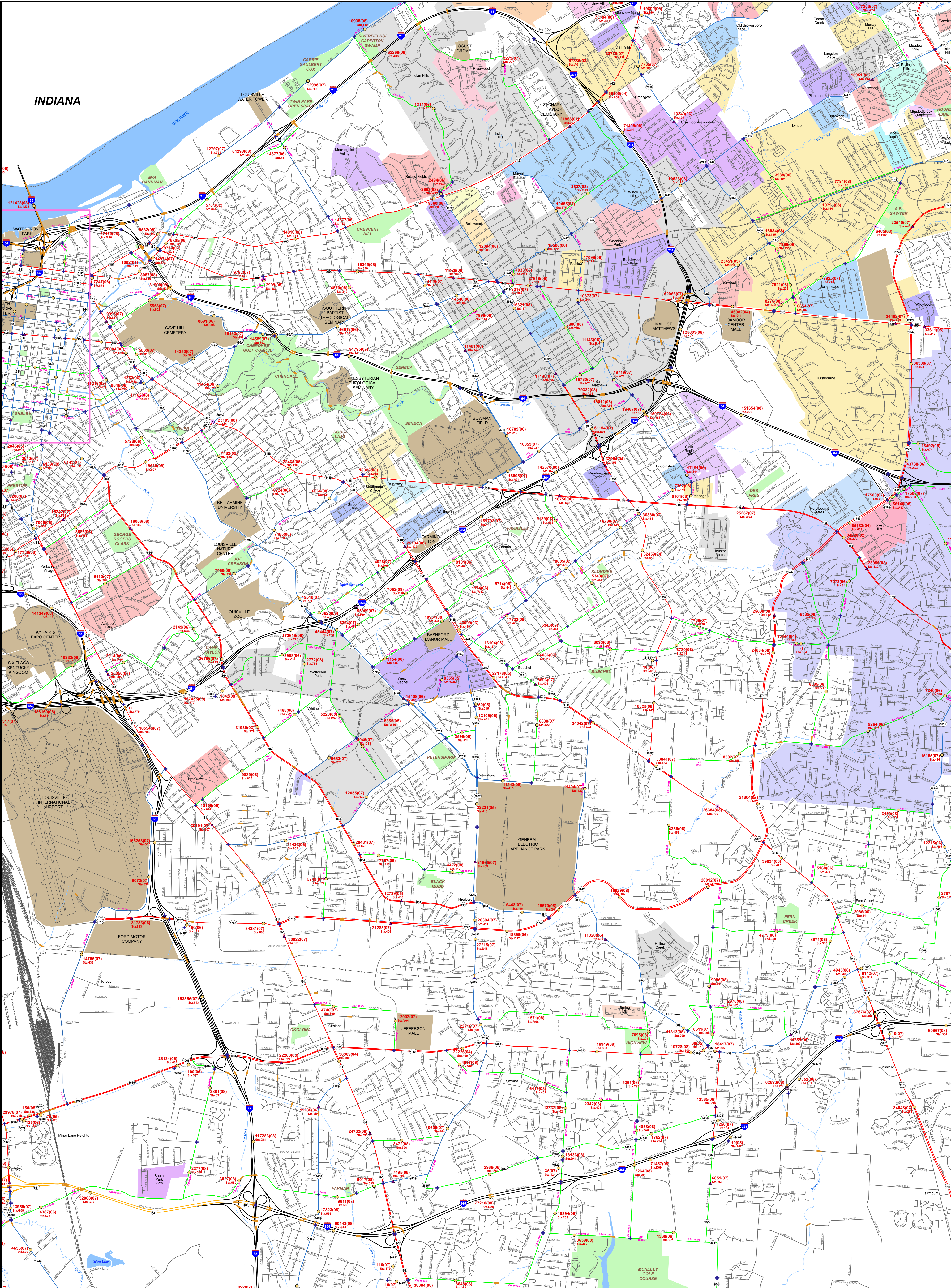
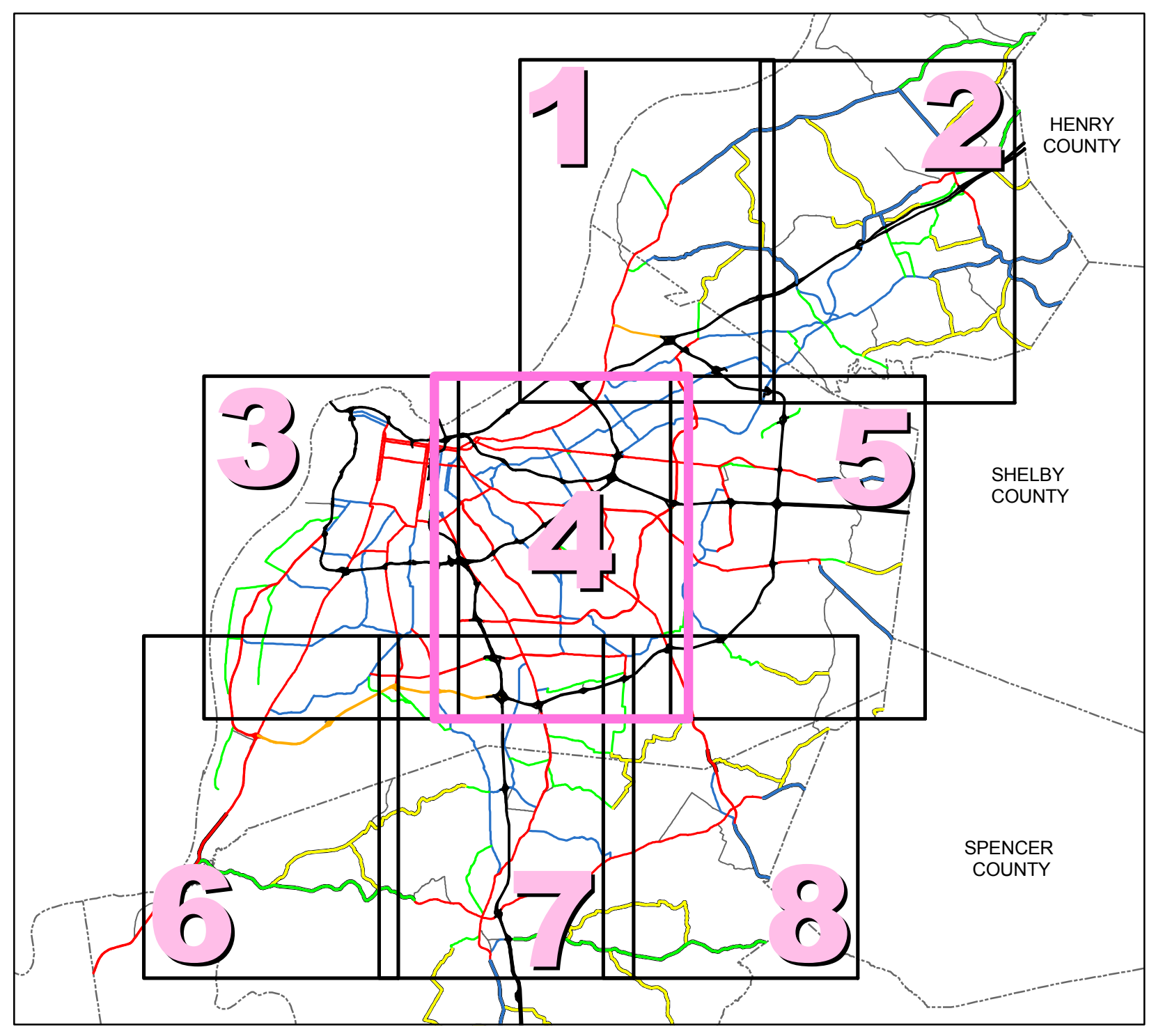


INDIANA



Page Key



- Count Stations**
- ATR
 - Full Coverage
 - Classification
 - HPMS
 - Index Station
 - Interstate
 - Toll Road
 - Local HPMS
 - Urban Minor
 - Adjacent
 - Termini
- Functional Classification**
- Rural Interstate
 - Rural Principal Arterial
 - Rural Minor Arterial
 - Rural Major Collector
 - Rural Minor Collector
 - Urban Interstate
 - Urban Freeways & Expressways
 - Urban Principal Arterial
 - Urban Minor Arterial Street
 - Urban Collector Street
 - Rural & Urban Local
 - Bridge
 - Railroad
 - Stream
 - City/Town
 - Federal Aid Urbanized Area 2000
 - Incorporated Area
 - Lake
 - State Park
 - National Park or Recreation Area
 - Defense Facility
 - Wildlife Area
 - Geological Area
 - State, National, or Private Forest



Traffic Station Counts
LOUISVILLE, BULLITT, HARDIN, JEFFERSON, OLDHAM, AND SPENCER COUNTY

Last map revision: AUGUST 2009
 0.5 0.25 0 0.5 1 1.5 2 Miles

Latest traffic count date for each station is indicated on the map in parentheses after the actual traffic count. For the most current traffic count information, please refer to the Counts Database Program (CTS) found on the Division of Planning website.
www.planning.kytc.ky.gov
 Station locations are plotted at segment midpoints where actual milepoints have not been verified in the field.
 Kentucky State Plane Coordinate System (NAD-83)